

CHICAGO HEALTHCARE SYSTEM COALITION

FOR PREPAREDNESS AND RESPONSE

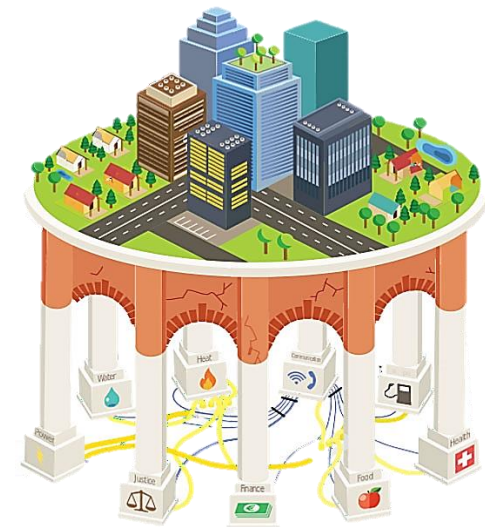


CP3: Chicago Public Private Partnership

Carrie Carlson
Senior Emergency Management Coordinator (SEMC)
Chicago Office of Emergency Management & Communications (OEMC)

What is CP3?

- A centralized secure portal containing relevant information regarding critical infrastructure and key assets within the City of Chicago
- The database provides critical facility information that assists first responders when responding to a threat or incident



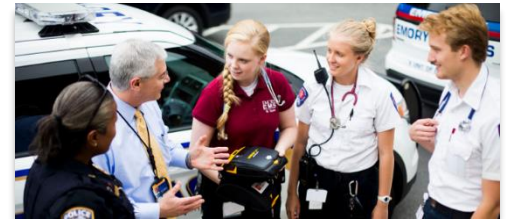
What Information is Included in CP3?

- **Specific Facility Information**
 - Hours of Operation/Population Served at Facility
 - Lists of Tenants and Vendors
 - Key Points of Contact
- **Known Threats / Hazards / Vulnerabilities within Facility**
 - Stored Chemicals/Flammable Products/Biological Waste on-site
 - Generator Availability and Capability
- **Additional Information and Facility Documentation**
 - Up-To-Date Floor Plans/Utility Information/Other Systems
 - Type of Staff on Site and Specialties
 - Security Camera Information



Keeping Information Up-To-Date Within CP3

- Identifies the decision makers and critical contacts to first responders.
- Allows for responders to be proactive and have knowledge of who and what is within a facility.
- Assists with larger scale planning and preparedness efforts to promote coordination between facilities and first responders.



How to Access CP3

- Go to www.preparedchicago.com
- Click the green box that says
 - “CP3 SECURE LOGIN/SIGN-UP TO BECOME A PARTNER”
- Log-in with existing email and password
- Or register as a new user

